

# ***TILT EDUCATION***

***THE INCLUSIVE LEARNING TEAM***





# About Us

**THE INCLUSIVE LEARNING TEAM**

TILT Education is an Alternative Provision dedicated to empowering young people aged 11-16 to overcome challenges that are making school life difficult.

We provide a warm and friendly learning environment where everyone works hard to meet their potential.

We celebrate success, build confidence and nurture a culture where it's ok to take chances and learn from our mistakes.

Young people are taught in small groups, a typical group size is four young people with two members of staff supporting their individual needs.

Our vision is to create an inspiring, inclusive, and ambitious educational environment where every pupil is encouraged to explore their full potential, develop a passion for learning, and thrive both academically and personally.



**Ryan Goodwin**  
**Head of Centre**

Qualified SENCo  
(Special Educational  
Needs Coordinator)

QTLS (Qualified  
Teaching and Learning  
Status)

Postgraduate in Special  
Needs and Inclusion



**Debbie Goode**  
**Headteacher**

NPQH (National  
Professional  
Qualification for  
Headship)

QTS (Qualified Teacher  
Status) ICT Specialism

BA Hons Multimedia  
Journalism



# ***Personalised Curriculum***

***THE INCLUSIVE LEARNING TEAM***

TILT Education adopts the hallmarks of what we feel contributes to an inclusive, accessible, engaging and dynamic curriculum, developing the whole persons knowledge, skills, understanding and attitudes.

Our curriculum is broad and balanced, enabling clear progression in subject knowledge and skills. Continual curriculum development ensures that we maintain a flexible and responsive approach towards our young people's needs and interests.

We teach a full range of accredited subjects which enable our young people to go on to destinations that meet their interests, aspirations and their post 16 intended course of study.

The qualifications we offer intend to drive individual progression and achievement all the way up to GCSE/ Level 2. Our Curriculum is well planned and ensures that young people of all abilities, including those with Special Education Needs, are able to acquire knowledge and understanding, develop and practise new skills and make progress in a range of learning areas

Literacy, Numeracy and PSHE form the foundations of our curriculum. English and Maths are embedded discreetly in all subjects to re-enforce learning.

We ensure that core subjects are taught in the mornings when our young people are more focused. In the afternoon the curriculum becomes more practical and active and includes; Enterprise, Art,, Team Building, The John Muir Award, PE, Outdoor Pursuits, Forest School and Catering and Horticulture.



## **Curriculum Aims**

Our aim is to have high academic, vocational, and technical ambition for all young people, supported by a broad curriculum. A curriculum that will support our young people to develop knowledge, understand concepts, acquire skills, build confidence and grow into well-adjusted young adults.

Our curriculum offer allows our young people the opportunity to graduate from TILT Education with qualifications which will open up opportunities in further education. It also focuses on important PHSE lessons, creative lessons, sports lessons and outdoor pursuits. These lessons support young people with the development of important key interpersonal skills, focusing on their behaviour and SEMH needs.





# Qualification Offer

THE INCLUSIVE LEARNING TEAM

Subject	Qual Number
AIM Entry Level—Level 2 Award in Mathematics. Open Awards E1—L2 Functional Skills Maths	E1 Award 603/3777/1 E2 Award 603/3785/02 E3 Award 603/3081/5 L2 Award 603/0269/5
AIM Entry Level Award in English Open Awards—Functional Skills English	E1 Award 603/0323/2 E2 Award 603/0324/4 E3 Award 603/0325/6 L1 Award 603/5478/1
AIM E3—Level 2 Award in Science	E3 Award 603/5505/0 L1 Award 601/0739/x
AIM E3—Level 2 Certificate in Employability Skills & ICT	E3 Certificate 603/1485/0 L1 Certificate 603/1490/4
AIM Level 1 Award in Craft and Design	L1 Award 600/8308/7
John Muir Award	Discovery/Explorer
AIM E3—Level 1 Award in Skills for working in Catering and Hospitality industries	L1 Award 603/1638/X
AIM Qualifications E3/Level 1 Award in Personal and Social Development	E3 Award 603/1512/X L1 Award (603/1517/9)
AIM Qualifications Level 1 Award in Skills for Working in Health, Lifestyle and Science Industries	L1 Award 603/1831/4
Short courses and qualifications	Food Hygiene, First Aid and Centre of Excellence Courses

## Non-Qualification Programme Activity

- Enrichment (Weekly School Trips)
- Assembly
- Multimedia (Animation) Video Editing, Music Making, Programming
- Personal Studies
- Physical Education / Outdoor Pursuits

## Non-Qualification Holistic Curriculum Offer

- Mindfulness
- Spiritual, Moral, Social and Cultural Vocational Experiences
- Community and Charitable Programme
- Work Experience
- Travel Training

The National Curriculum informs our planning, but we operate a predominately Functional Skills and Personal Development led curriculum.

It has been developed to increase each young person's knowledge and skills across a broad range of subjects so that they make good progress according to their ability and to instil emotional resilience.

The curriculum is constantly under review, taking account of the changes in the needs of our young people and those of our society.

Our staff are enthusiastic, qualified and have good knowledge of the subject matter being taught. They adopt teaching methods to suit the young person's learning styles in the group and the subject being taught.

Our curriculum is inclusive, we ensure that all young people are treated fairly and make reasonable adjustments to account for the needs of our pupils.



Our PSHE program is tailored by our Emotional Wellbeing Coordinator (EWC), a qualified Neurodevelopmental Psychologist. Beyond delivering the PSHE curriculum, the EWC plays a pivotal role in supporting young people through academic assessments, small group sessions, and one-on-one interventions.

Additionally, our EWC is available to provide targeted support for young people, including gathering evidence for EHCPs using a graduated approach, conducting therapeutic and educational assessments, and developing behaviour management plans.



## Therapeutic/ Educational Support Assessments and Interventions

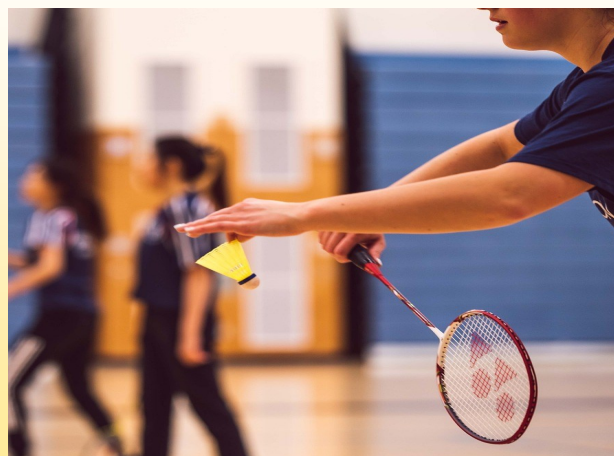
- Cognitive Behaviour Therapy with Exposure and Response Prevention
- Elklan (speech and language)
- Mindfulness
- Stress Management
- Makaton
- Dialectal behaviour therapy
- Sensory diet
- Anger Management
- Obsessive Compulsive Disorder interventions
- Dyslexia screening
- Diagnosis awareness
- Lego therapy

## Facilities

Our onsite facilities include an ICT suite, teaching Classrooms, a kitchen, a sensory/ PHSE classroom and a breakout room.

Our outdoor facilities include a small playing field, wellbeing garden and eating area.

Most of our afternoon activities take place off site at local sports centres and parks, TILT Education has its own fleet of cars to transport young people to these venues.





# ***ENRICHMENT***

## ***THE INCLUSIVE LEARNING TEAM***

At Tilt Education we strongly believe that enrichment activities can enhance pupils learning journey and support their social, emotional and mental wellbeing, they are integral to Tilt Educations curriculum offer.

They increase independence and confidence in a safe and positive environment which are essential ingredients for personal and social development, allowing new friendships to bloom and new challenges to be faced. They take pupil's out of their comfort zone and contribute to a wider world perspective allowing their experience and their perspective on the world we live in to grow.

Pupils will have the opportunity to take part in a wide variety of extracurricular activities throughout the academic year. Many trips will support learning within the classroom. Trips to museums will support science and local history lessons. Trips to art galleries and places of worship will support our enterprise and PSHE lessons and trips to local colleges/ workplaces will enrich our employability qualification offer.

Enrichment which focuses on mental wellbeing, building resilience, confidence as well as contributing to the John Muir Award qualification will also be offered E.G hiking, geo-caching, den building, initiative exercises, bike riding, kayaking, trampolining and climbing.



## **Aims & Ethos**

**"To create an inspiring, inclusive, and ambitious educational environment where every pupil is encouraged to explore their full potential, develop a passion for learning, and thrive both academically and personally. "**



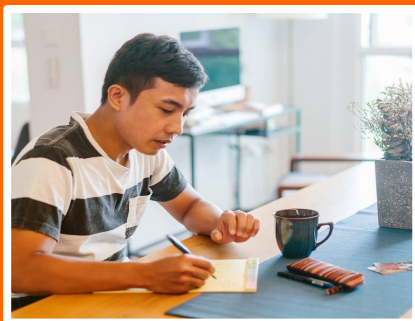


# ***Admissions Process***

***THE INCLUSIVE LEARNING TEAM***

## **Admission Criteria**

1. Placements for boys and girls aged 11-16
2. Evidence of the young person facing challenges within a mainstream environment
3. A statement of SEN or EHC Plan



**Initial enquiry from parent / carer to the Local Authority or Roll School**



**Referral papers to be considered by TILT Education**



**Assessment of needs completed TILT Education**



**Young person and family visit**



**Discussion held with Local Authority / Roll School**



**Placement offered if applicable**



**Transition plan**

## **Contact Us**

Address -  
TILT Education,  
The Bungalow,  
Cardway Business Park,  
Linley Lane,  
Alsager,  
ST7 2UX.

Website - [www.tilt-education.co.uk](http://www.tilt-education.co.uk)

Email - [contactus@tilt-education.co.uk](mailto:contactus@tilt-education.co.uk)

Landline - 01782 528624

